

# Passion Fruit Production Calendar



SCAN ME  
To get this online



2023

2024

2025



Implemented by



# January

## Farm Planning

### TO DO:

- ③ Learn about passion fruit growing.
- ③ Make a production plan.
- ③ Make a budget plan.
- ③ Research nurseries.

*Which inter-crops can I plant?*



If my farm is located in the lowlands (below 500m above sea level), it is better to plant yellow passion fruit. If it is located in the highlands, purple passion fruit is more suitable. It is best to choose a flat piece of land in full sun, with fertile, well-draining soil, as passion fruit is a heavy feeder and sensitive to waterlogging.

## Cost estimate for the production of 1 acre of passion fruit

Item No.	Description	Quantity	Unit Cost	Total Cost
1	Land preparation (tilling to remove weeds)	1	5,000	5,000
2	Digging holes (2ft x 2ft)	700	20	14,000
3	Poles (for support)	300	100	30,000
4	Holes to support posts	300	10	3,000
5	Grafted seedlings	700	50	35,000
6	Wire (for support)	1	5,000	5,000
7	U - Nails (for support)	2	200	400
8	Labour (planting to harvest) approx. per month	6	4,000	24,000
9	Chemicals (approx.)	Assorted	10,000	10,000
10	Contigencies	1	5,000	5,000
<b>Grand Total (KES)</b>				<b>132,400</b>



*“To succeed in passion fruit farming, it is important to know the costs and the expected revenues for proper planning.  
The best time to plant your seedlings is April or August”*

*- Naftali Rono, Agronomist Equatorial Hortifresh*

### January | 2023

Sun	Mon	Tue	Wed	Thu	Fri	Sat
1 <small>New Year's Day</small>	2	3	4	5	6	7
8	9	10	11	12	13	14
15	16	17	18	19	20	21
22	23	24	25	26	27	28
29	30	31				

### January | 2024

Sun	Mon	Tue	Wed	Thu	Fri	Sat
	1 <small>New Year's Day</small>	2	3	4	5	6
7	8	9	10	11	12	13
14	15	16	17	18	19	20
21	22	23	24	25	26	27
28	29	30	31			

### January | 2025

Sun	Mon	Tue	Wed	Thu	Fri	Sat
			1 <small>New Year's Day</small>	2	3	4
5	6	7	8	9	10	11
12	13	14	15	16	17	18
19	20	21	22	23	24	25
26	27	28	29	30	31	

# February

## Farm Preparation



*Cut vegetation can remain in the field as mulch.*

Consider minimum tillage to conserve water and nutrients. This will reduce cost and workload.

### TO DO:



- Clear and prepare the area selected for the passion fruit orchard.
- Carry out soil analysis through experts from institutions like KALRO/KEPHIS, or reputable companies.
- Implement the recommendations from the soil testing report for good yields.



*Grafting protects purple passion fruit from diseases.*

Low-lying area - separate sample

Walk across the field in a zig-zag pattern and take sub-samples at up to 20 locations. Exclude areas that are very different (eroded, stony, lower-lying, etc.) and sample these separately.



Take a slice of soil (1/2" thick) from each sub-sampling point and mix all sub-samples in a bucket. Then transfer 1/2kg of the sample into the soil sample bag.

Eroded spot - separate sample

Use a chisel plough to allow the passion fruit roots to grow deep into the soil.



"It is important to know your soil nutrient status and soil pH to plan for an appropriate action in order to maximize yields."

- **Chrispus Kahiga**, Certified Integrated Pest Management (IPM) trainer

### February | 2023

Sun	Mon	Tue	Wed	Thu	Fri	Sat
			1	2	3	4
5	6	7	8	9	10	11
12	13	14	15	16	17	18
19	20	21	22	23	24	25
26	27	28				

### February | 2024

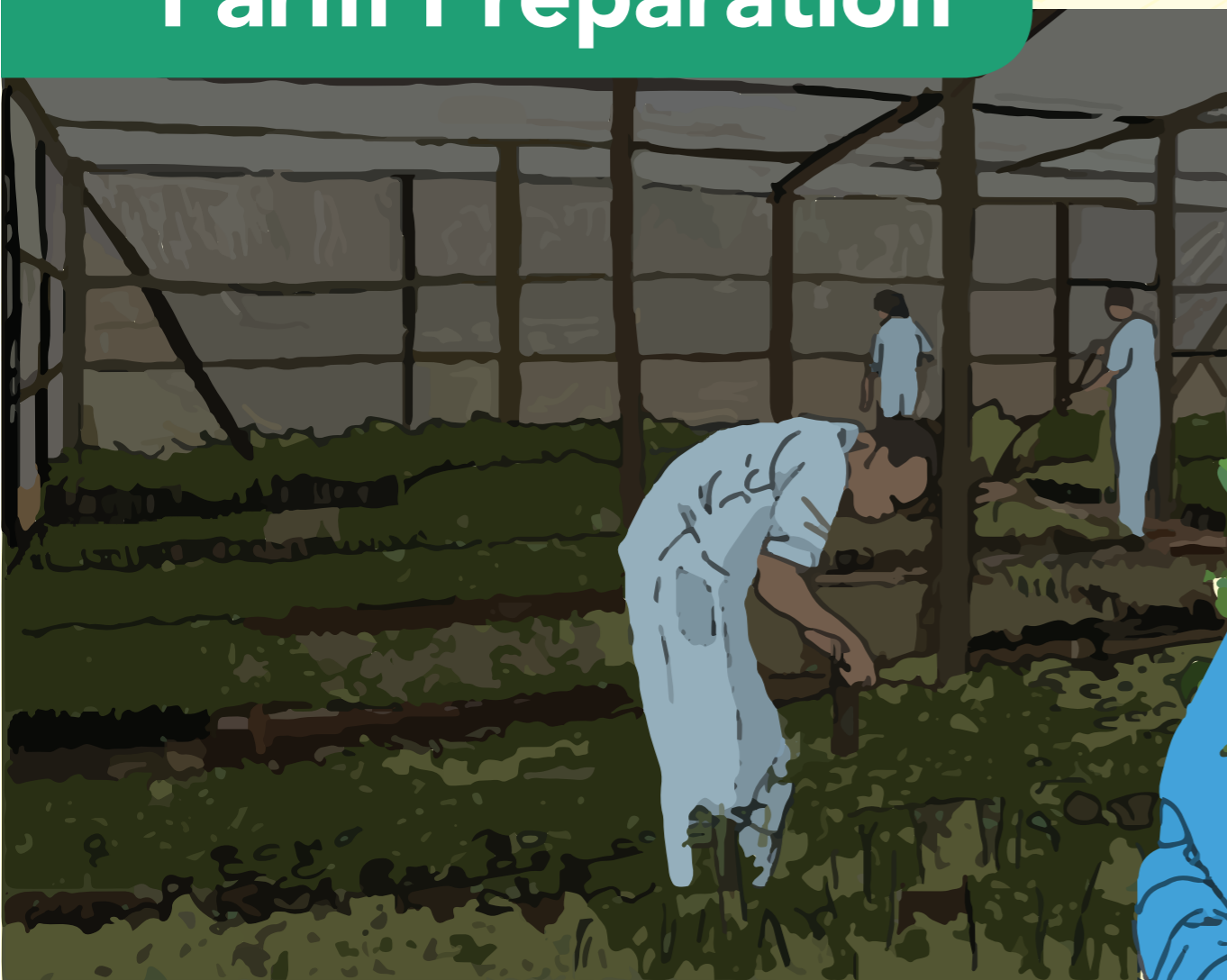
Sun	Mon	Tue	Wed	Thu	Fri	Sat
				1	2	3
4	5	6	7	8	9	10
11	12	13	14	15	16	17
18	19	20	21	22	23	24
25	26	27	28	29		

### February | 2025

Sun	Mon	Tue	Wed	Thu	Fri	Sat
						1
2	3	4	5	6	7	8
9	10	11	12	13	14	15
16	17	18	19	20	21	22
23	24	25	26	27	28	

# March

## Farm Preparation

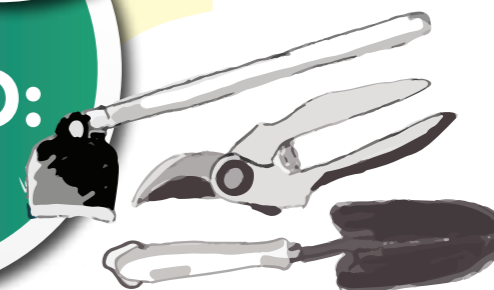


Certified nurseries follow a strict hygiene regime to ensure their seedlings are healthy and of high-quality to avoid losses after planting.



*Healthy seedlings are dark-green, pest- and disease-free, and have grown well from the grafting point.*

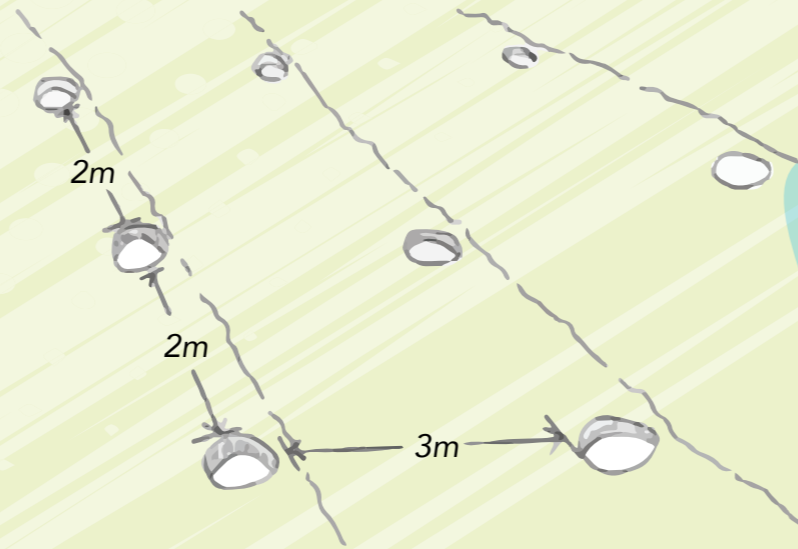
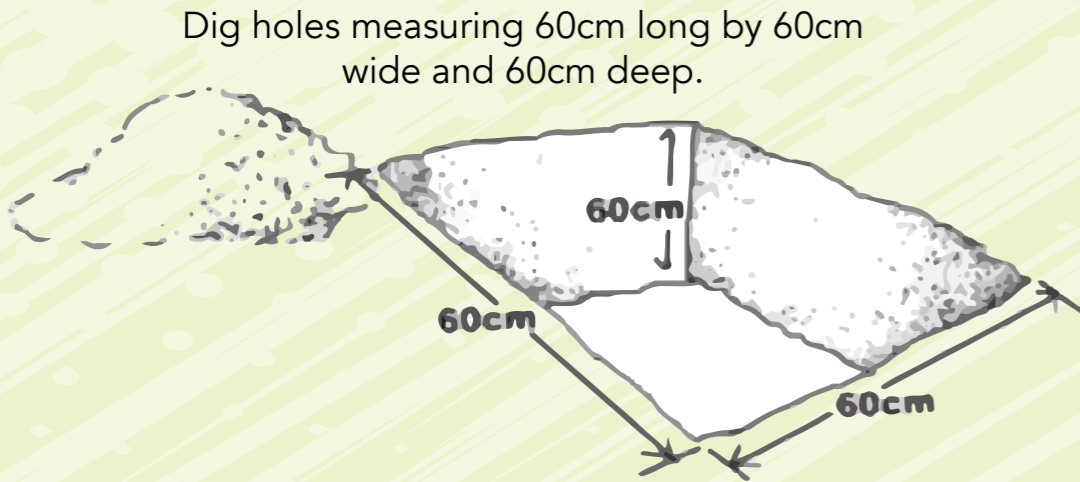
### TO DO:



#### 3 weeks before planting:

- Mark out the position of the holes.
- Dig out the holes.
- Obtain healthy seedlings from a certified nursery.

The recommended spacing for planting holes is 2m by 3m in manual cultivation (1,600 plants/ha) and at least 3m by 3m in mechanized cultivation (1,100 plants/ha).



Separate the top and sub-soils. Mix the top soil of each hole with 2 *debes* (20kg) of well-decomposed manure, lime, and/or fertilizer as recommended by the soil test report, and fill the hole with this mixture.

Well-decomposed manure has a fine texture, is dark in colour, slightly moist, and has a pleasant smell.



*“Ensure to get passion fruit seedlings only from a KEPHIS-certified and HCDA/AFA-registered nursery.”*

*- Somari Sabila, Certified Nursery Operator - Mountain Berean*

### March | 2023

Sun	Mon	Tue	Wed	Thu	Fri	Sat
			1	2	3	4
5	6	7	8	9	10	11
12	13	14	15	16	17	18
19	20	21	22	23	24	25
26	27	28	29	30	31	

### March | 2024

Sun	Mon	Tue	Wed	Thu	Fri	Sat
31					1	2
3	4	5	6	7	8	9
10	11	12	13	14	15	16
17	18	19	20	21	22	23
24	25	26	27	28	29	30

Good Friday

### March | 2025

Sun	Mon	Tue	Wed	Thu	Fri	Sat
30	31					1
2	3	4	5	6	7	8
9	10	11	12	13	14	15
16	17	18	19	20	21	22
23	24	25	26	27	28	29

# April

## Planting



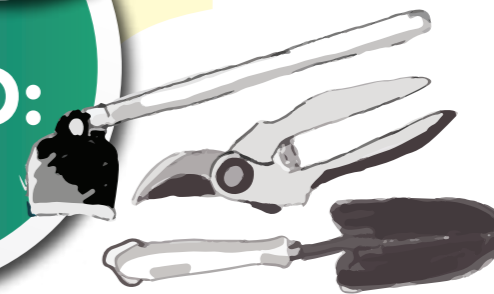
Remove the polythene bag/  
tube by holding the seedling  
upright.



Plant the seedlings with  
the soil attached to the  
roots.



### TO DO:

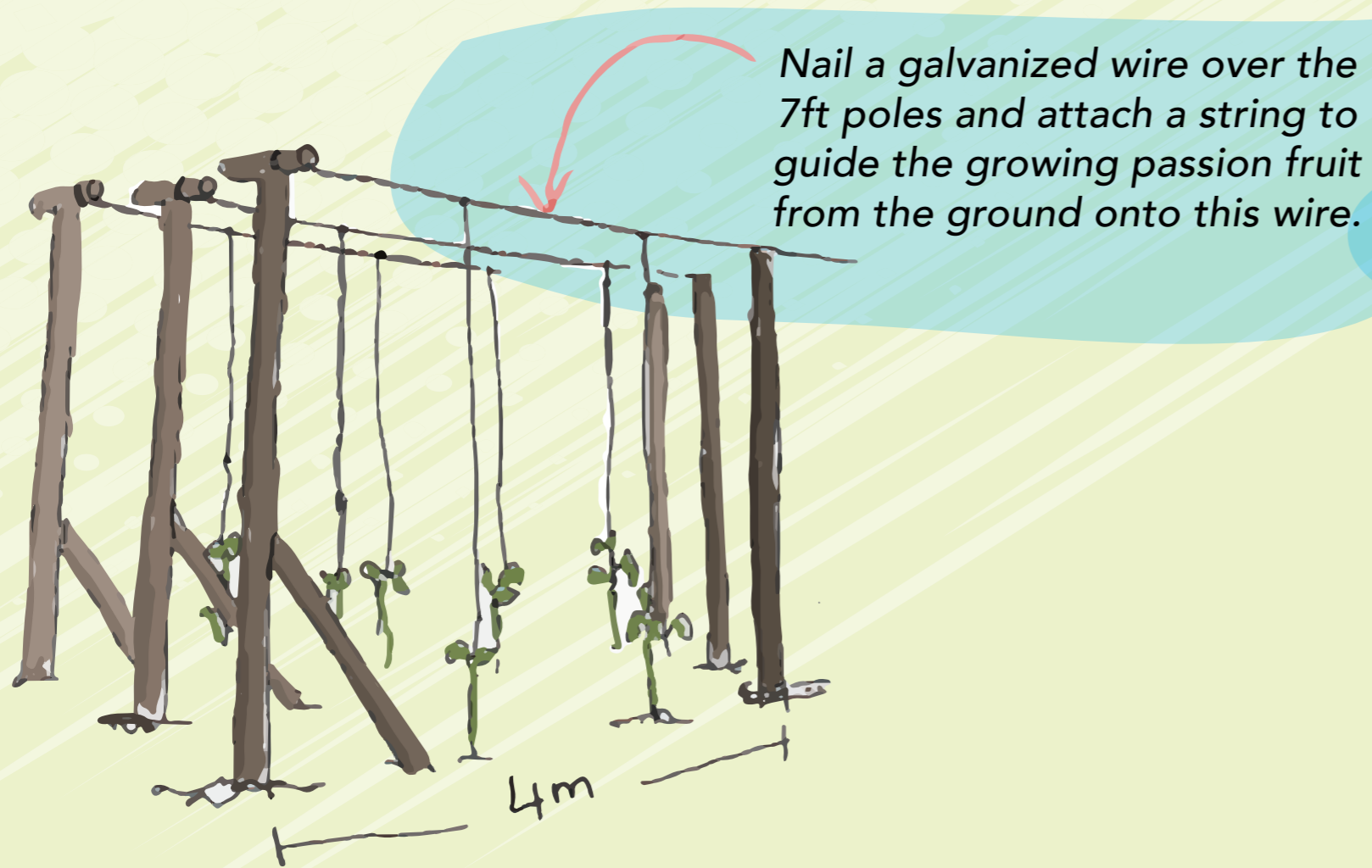


- ① Buy poles, wire, and U-nails.
- ② Erect the trellis.
- ③ Keep seedlings shaded and watered regularly.
- ④ Plant seedlings out once the rains start.

*"The best time to plant your passion fruits is at the onset of the rains (April for long rains and August for the short rains). Follow all the steps while transplanting as shown. Plant your seedlings properly for healthy growth and good yields."*

- Abraham Kiboki, CEO - Mountain Berean





Water the seedlings immediately after transplanting to avoid transplanting shock.

### April | 2023

Sun	Mon	Tue	Wed	Thu	Fri	Sat
30						1
2	3	4	5	6	7 <small>Good Friday</small>	8
9	10 <small>Easter Monday</small>	11	12	13	14	15
16	17	18	19	20	21	22
23	24	25	26	27	28	29

### April | 2024

Sun	Mon	Tue	Wed	Thu	Fri	Sat
	1 <small>Easter Monday</small>	2	3	4	5	6
7	8	9	10	11	12	13
14	15	16	17	18	19	20
21	22	23	24	25	26	27
28	29	30				

### April | 2025

Sun	Mon	Tue	Wed	Thu	Fri	Sat
		1	2	3	4	5
6	7	8	9	10	11	12
13	14	15	16	17	18 <small>Good Friday</small>	19
20	21 <small>Easter Monday</small>	22	23	24	25	26
27	28	29	30			

# May

## Crop Management Practice



Weed regularly and cover the soil with a thick layer of mulch, or plant cover crop between the rows.



TO DO:

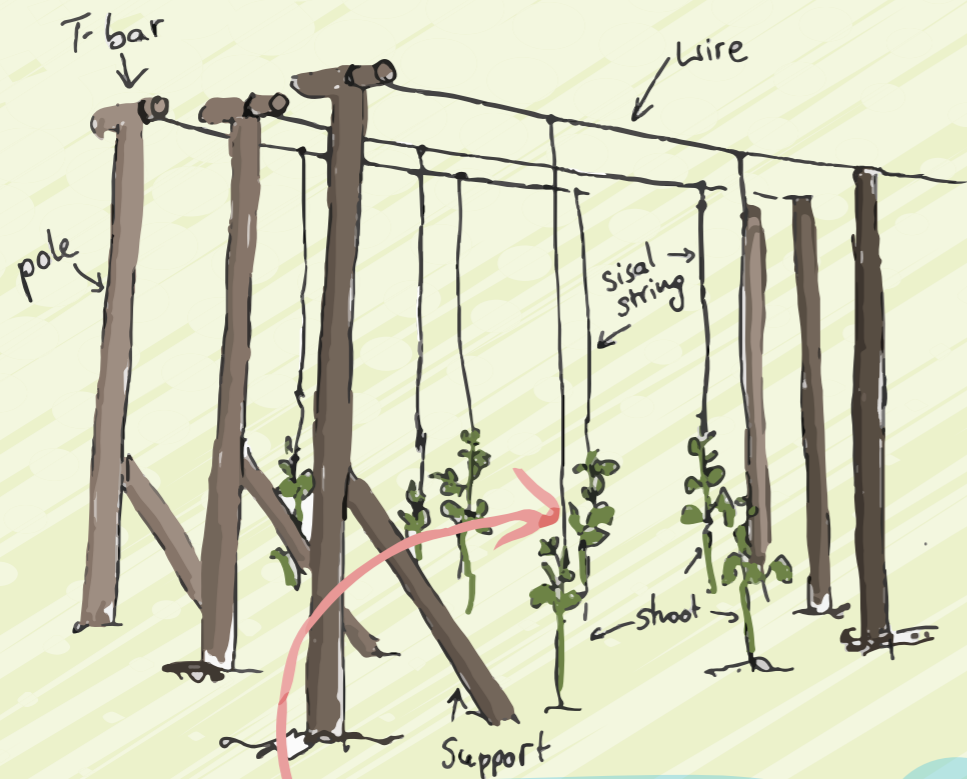


### Train the shoots:

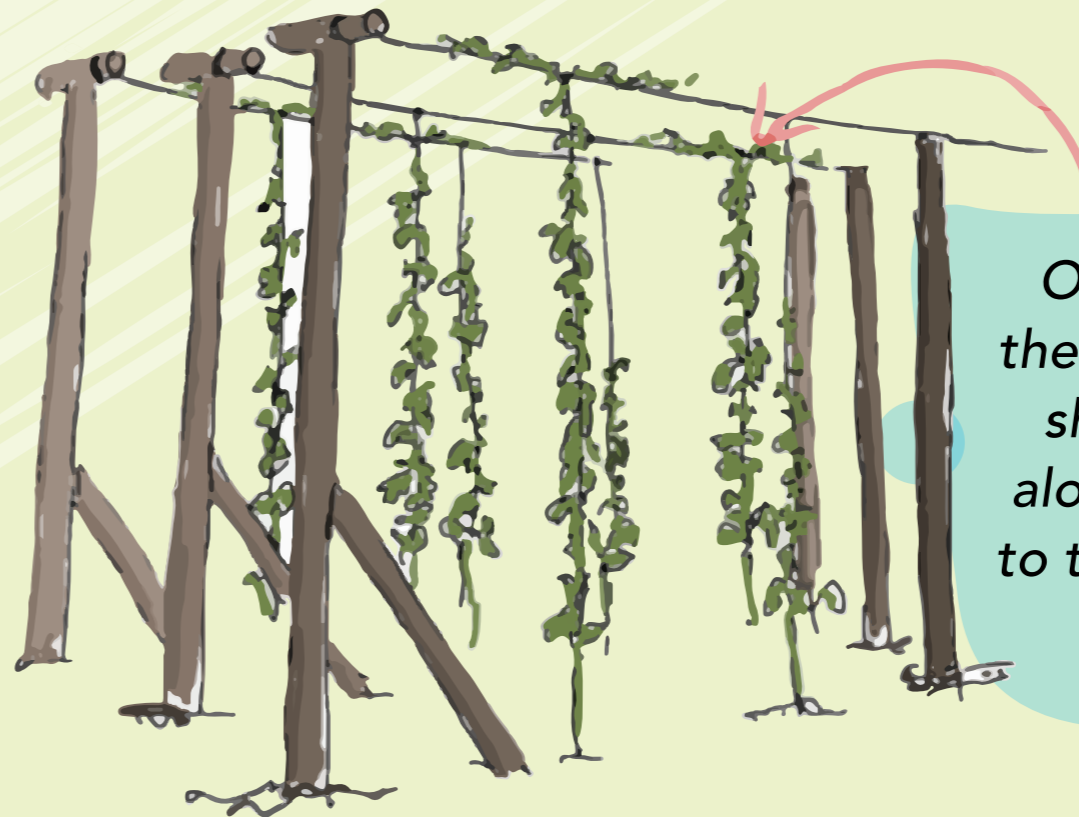
- Guide the shoots along the sisal string until they reach the wire at the top.

*"Cultivation of land is the most important labour of man. When tillage begins, other agronomic practices follow."*

- **Sylvester Odundo**, Soil Scientist, Friends Kaimosi College



Guide the shoots along the sisal string until they reach the wire at the top.



Once the plant touches the wire, select two strong shoots and guide them along the wire, one going to the left, the other going to the right.

### May | 2023

Sun	Mon	Tue	Wed	Thu	Fri	Sat
	<b>1</b> Labour Day	<b>2</b>	<b>3</b>	<b>4</b>	<b>5</b>	<b>6</b>
<b>7</b>	<b>8</b>	<b>9</b>	<b>10</b>	<b>11</b>	<b>12</b>	<b>13</b>
<b>14</b>	<b>15</b>	<b>16</b>	<b>17</b>	<b>18</b>	<b>19</b>	<b>20</b>
<b>21</b>	<b>22</b>	<b>23</b>	<b>24</b>	<b>25</b>	<b>26</b>	<b>27</b>
<b>28</b>	<b>29</b>	<b>30</b>	<b>31</b>			

### May | 2024

Sun	Mon	Tue	Wed	Thu	Fri	Sat
			<b>1</b> Labour Day	<b>2</b>	<b>3</b>	<b>4</b>
<b>5</b>	<b>6</b>	<b>7</b>	<b>8</b>	<b>9</b>	<b>10</b>	<b>11</b>
<b>12</b>	<b>13</b>	<b>14</b>	<b>15</b>	<b>16</b>	<b>17</b>	<b>18</b>
<b>19</b>	<b>20</b>	<b>21</b>	<b>22</b>	<b>23</b>	<b>24</b>	<b>25</b>
<b>26</b>	<b>27</b>	<b>28</b>	<b>29</b>	<b>30</b>	<b>31</b>	

### May | 2025

Sun	Mon	Tue	Wed	Thu	Fri	Sat
				<b>1</b> Labour Day	<b>2</b>	<b>3</b>
<b>4</b>	<b>5</b>	<b>6</b>	<b>7</b>	<b>8</b>	<b>9</b>	<b>10</b>
<b>11</b>	<b>12</b>	<b>13</b>	<b>14</b>	<b>15</b>	<b>16</b>	<b>17</b>
<b>18</b>	<b>19</b>	<b>20</b>	<b>21</b>	<b>22</b>	<b>23</b>	<b>24</b>
<b>25</b>	<b>26</b>	<b>27</b>	<b>28</b>	<b>29</b>	<b>30</b>	<b>31</b>

# June

## Prunning

Choose the two strongest vines to grow up the string and remove all other shoots at ground level.



TO DO:



- Prune regularly to remove unproductive, diseased and pest-infested vines as well as tendrils.



Ensure you sterilize pruning tools and equipment from one plant to another so as to avoid spreading diseases.



Cut off 'suckers' which are unproductive shoots growing from the leaf axils, to keep the plant well-aerated and manageable.



### June | 2023

Sun	Mon	Tue	Wed	Thu	Fri	Sat
				<b>1</b> <small>Madaraka Day</small>	<b>2</b>	<b>3</b>
<b>4</b>	<b>5</b>	<b>6</b>	<b>7</b>	<b>8</b>	<b>9</b>	<b>10</b>
<b>11</b>	<b>12</b>	<b>13</b>	<b>14</b>	<b>15</b>	<b>16</b>	<b>17</b>
<b>18</b>	<b>19</b>	<b>20</b>	<b>21</b>	<b>22</b>	<b>23</b>	<b>24</b>
<b>25</b>	<b>26</b>	<b>27</b>	<b>28</b>	<b>29</b>	<b>30</b>	

### June | 2024

Sun	Mon	Tue	Wed	Thu	Fri	Sat
<b>30</b>						<b>1</b> <small>Madaraka Day</small>
<b>2</b>	<b>3</b>	<b>4</b>	<b>5</b>	<b>6</b>	<b>7</b>	<b>8</b>
<b>9</b>	<b>10</b>	<b>11</b>	<b>12</b>	<b>13</b>	<b>14</b>	<b>15</b>
<b>16</b>	<b>17</b>	<b>18</b>	<b>19</b>	<b>20</b>	<b>21</b>	<b>22</b>
<b>23</b>	<b>24</b>	<b>25</b>	<b>26</b>	<b>27</b>	<b>28</b>	<b>29</b>

### June | 2025

Sun	Mon	Tue	Wed	Thu	Fri	Sat
<b>1</b> <small>Madaraka Day</small>	<b>2</b>	<b>3</b>	<b>4</b>	<b>5</b>	<b>6</b>	<b>7</b>
<b>8</b>	<b>9</b>	<b>10</b>	<b>11</b>	<b>12</b>	<b>13</b>	<b>14</b>
<b>15</b>	<b>16</b>	<b>17</b>	<b>18</b>	<b>19</b>	<b>20</b>	<b>21</b>
<b>22</b>	<b>23</b>	<b>24</b>	<b>25</b>	<b>26</b>	<b>27</b>	<b>28</b>
<b>29</b>	<b>30</b>					

# July

## Pests & Disease Control

### PESTS

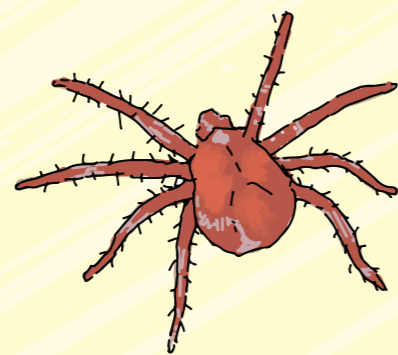


#### Mealy Bugs

- ④ They appear as white waxy masses on stems, fruits and along the veins on the underside of leaves.
- ④ Coating of stems and fruits with honeydew and sooty mold.
- ④ Plants wilt, leaves turn yellow and dry and they fall off.

#### Control Measures

- ④ Prune and destroy affected parts.
- ④ Remove and destroy heavily infested parts.
- ④ Spray with a steady stream of water to wash off the mealy bugs.
- ④ Use recommended pesticides.

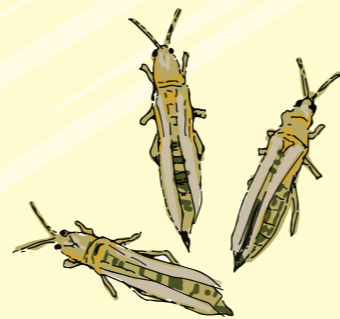


#### Red Spider Mites

- ④ They cause leaves to become reddish brown.
- ④ Leaves become hard and dry.
- ④ Webs are visible on the leaves.

#### Control Measures

- ④ Uproot and burn infested plants.
- ④ Keep the field free of weeds.
- ④ Remove and destroy infested crop residues immediately after harvest.
- ④ Spray appropriate insecticides.



#### Thrips

- ④ Plants become stunted and plant parts shrivel.
- ④ Flowers and young fruits fall prematurely.
- ④ Fruits cause tiny lesions.
- ④ Heavy infestation cause premature wilting, leaves and shoots become distorted.

#### Control Measures

- ④ Ploughing and harrowing land to kill pupae in the soil.
- ④ Intercropping with crop such as garlic.
- ④ Crop rotation.
- ④ Use recommended pesticides.



#### Aphids

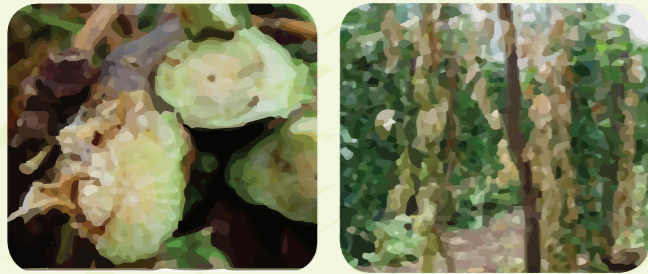
- ④ They suck plant sap and cause leaf curling and deforming.

#### Control Measures

- ④ Spraying with appropriate insecticides.
- ④ Natural enemies such as Ladybird beetle feeds on aphids.

### TO DO:

- ④ Regularly, walk into the farm to check for pests and diseases on leaves. When noticed on time, they become easy to control.



### Fusarium wilt

- ⌚ Yellowing of leaves.
- ⌚ Plants turn brownish at the base and crack vertically.
- ⌚ Vines wilt and plants collapse completely.
- ⌚ The stems appear brown upon dissection.

#### Control Measures

- ⌚ Remove and burn affected plants.
- ⌚ Use yellow rootstock that is wilt resistant.
- ⌚ Sterilize potting media.
- ⌚ Disinfect the pruning tools from plant to plant.



### Woodiness virus

- ⌚ Light and dark green mosaic pattern on leaves often with light yellow speckle.
- ⌚ Small, yellow ring spots on upper leaf surface.
- ⌚ Small and misshapen fruits with very hard skin and small pulp cavity.
- ⌚ Cracking of affected fruits.

#### Control Measures

- ⌚ Use clean planting material.
- ⌚ Clean pruning tools.
- ⌚ Use resistant hybrids or rootstocks of Yellow Passion Fruit.
- ⌚ Remove diseased vines from the field.
- ⌚ Do proper weeding.
- ⌚ Control vectors (aphids).



### Phytophthora blight

- ⌚ Leaves are water-soaked and light-brown in colour.
- ⌚ Leaves fall readily.
- ⌚ Affected stems turn purple and then become brown above the graft union.
- ⌚ Wilting of vines.

#### Control Measures

- ⌚ Field sanitation.
- ⌚ Mulching of orchards to minimize water splash.



### Septoria spot

- ⌚ Brown spots up to 2mm on leaves with black dots.
- ⌚ Falling of leaves.
- ⌚ Spots on stems.
- ⌚ Light brown spots on fruits with black dots.

#### Control Measures

- ⌚ Field sanitation (collect and dispose fallen fruits).
- ⌚ Clear weeds.
- ⌚ Pruning vines to reduce density and humidity.

DISEASES

## July | 2023

Sun	Mon	Tue	Wed	Thu	Fri	Sat
30	31					1
2	3	4	5	6	7	8
9	10	11	12	13	14	15
16	17	18	19	20	21	22
23	24	25	26	27	28	29

## July | 2024

Sun	Mon	Tue	Wed	Thu	Fri	Sat
	1	2	3	4	5	6
7	8	9	10	11	12	13
14	15	16	17	18	19	20
21	22	23	24	25	26	27
28	29	30	31			

## July | 2025

Sun	Mon	Tue	Wed	Thu	Fri	Sat
		1	2	3	4	5
6	7	8	9	10	11	12
13	14	15	16	17	18	19
20	21	22	23	24	25	26
27	28	29	30	31		